

Gweedore Area Private Development



Located in the ever popular Gaeltacht Area known locally as “The Golden Mile”, this new private development consists of 4 no. Houses thereon. These properties have been tastefully designed and will be complete to a High Turn Key Standard. Award winning pubs and restaurants within minutes walk as are various shops and safe and sandy beaches. Further information, details and prices from Campbells Auctioneers.

Ref 734

Further information:

General:

All walls and ceiling painted

All doors, skirting and architrave supplied, fitted & painted / varnished

Staircase supplied & fitted

Fully Fitted Kitchen & Utility

Tiling

Fireplace Fitted

All sanitary wear supplied & fitted

PVC Window & Doors

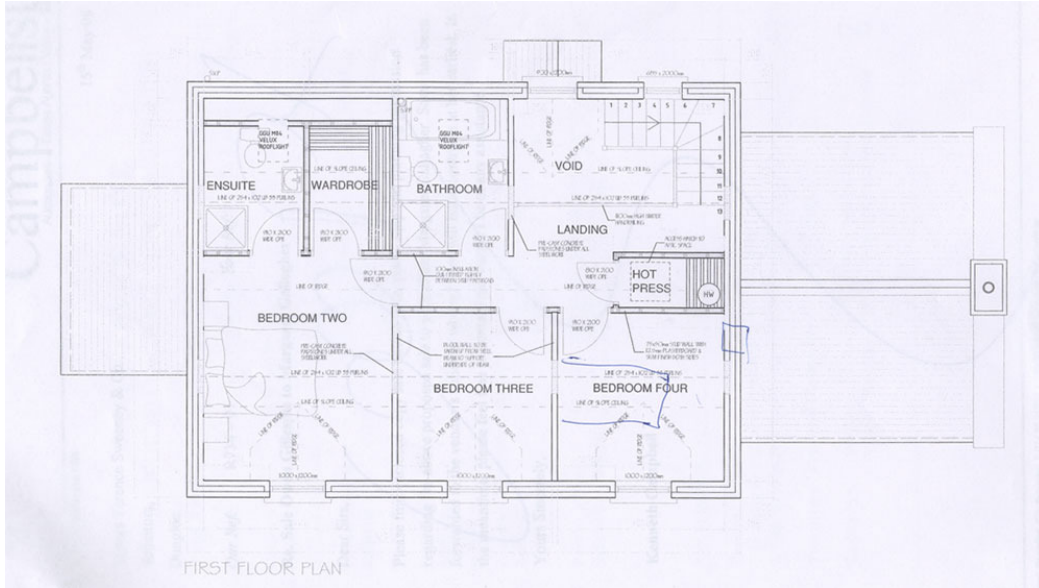
Exterior:

Concrete Path Surround

Kerbed & Gravel Driveway

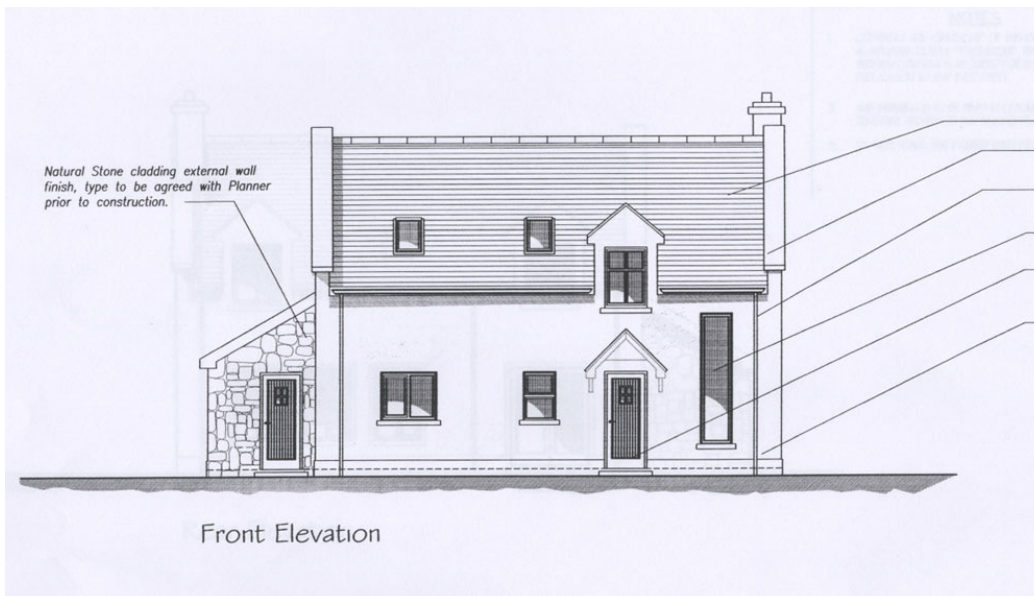
Gardens Sown Out

Ranch Style Fencing



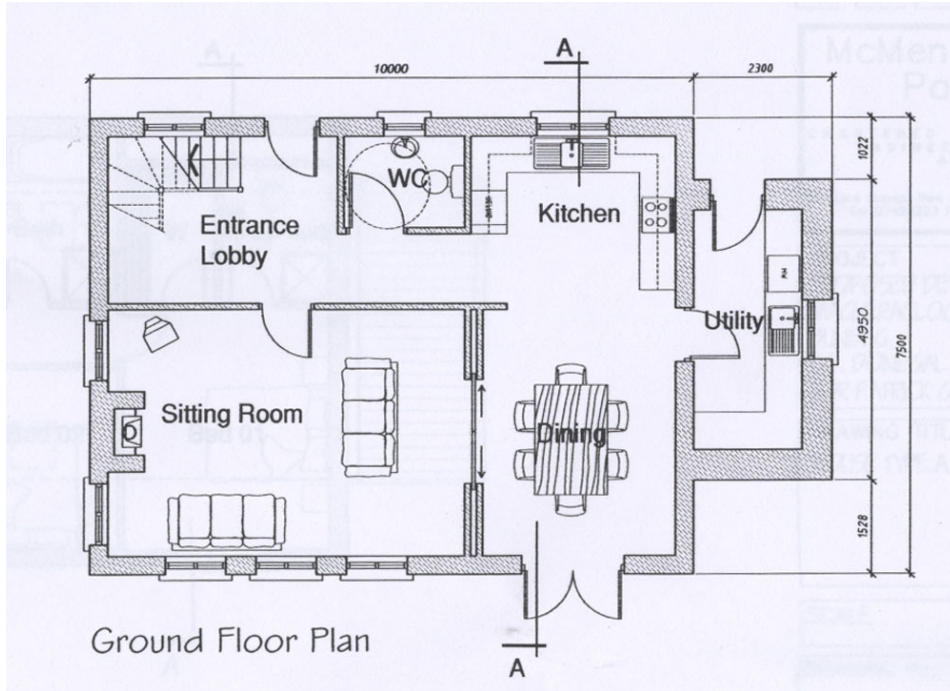
House No. 1 – 1st Floor Plan

House No. 2

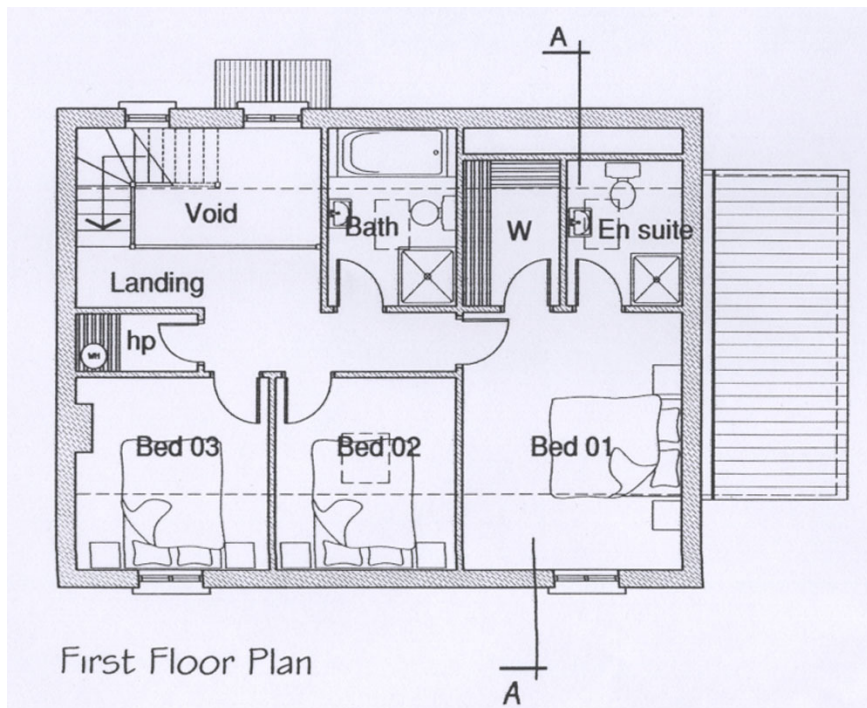


House No.2 - Front Elevation

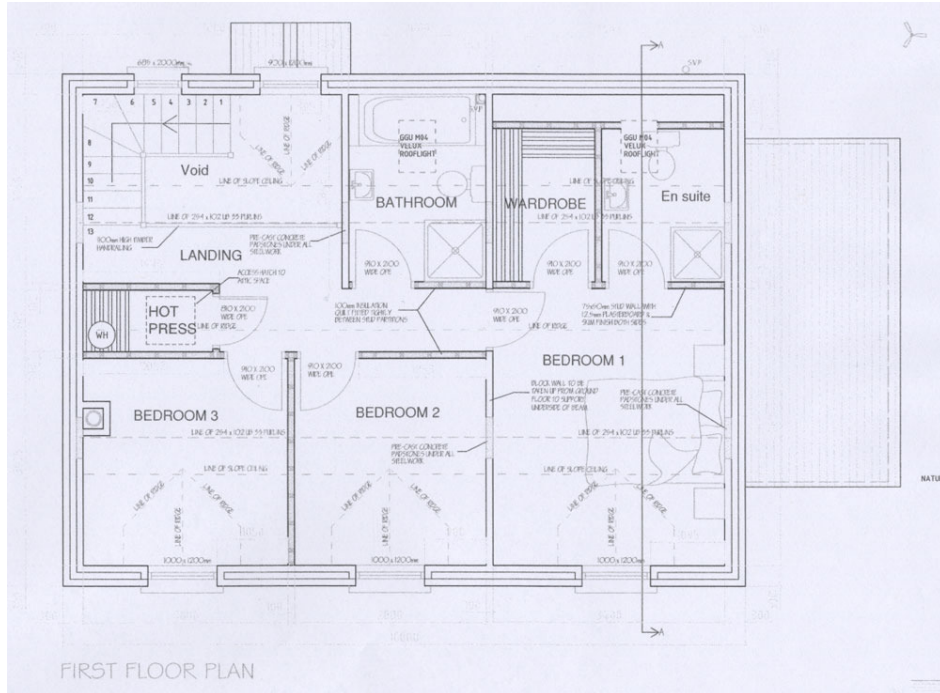
Entrance Lobby – WC – Kitchen & Dining – Utility Room – Sitting Room –
 Master Bedroom with En-suite & Walk In Robe – Bedroom 2 – Bedroom 3
 – Bathroom – Hot Press – Total Floor Area = 129.25m² / 1390.73 sq ft.



House No.2 - Ground Floor Plan



House No. 2 - 1st Floor Plan



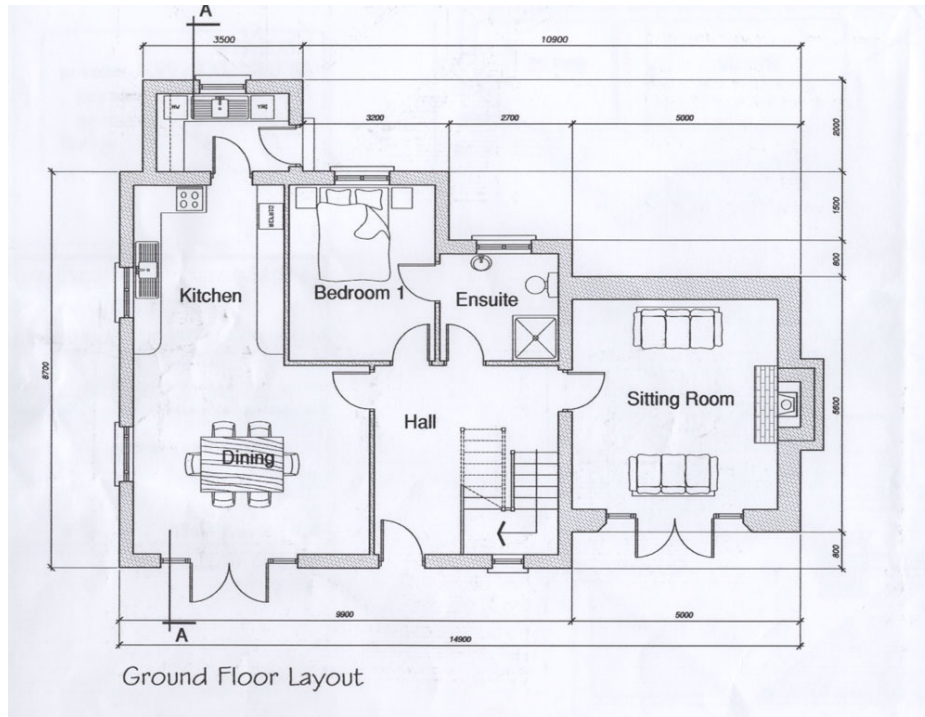
House No. 3 – 1st Floor Plan

House No. 4

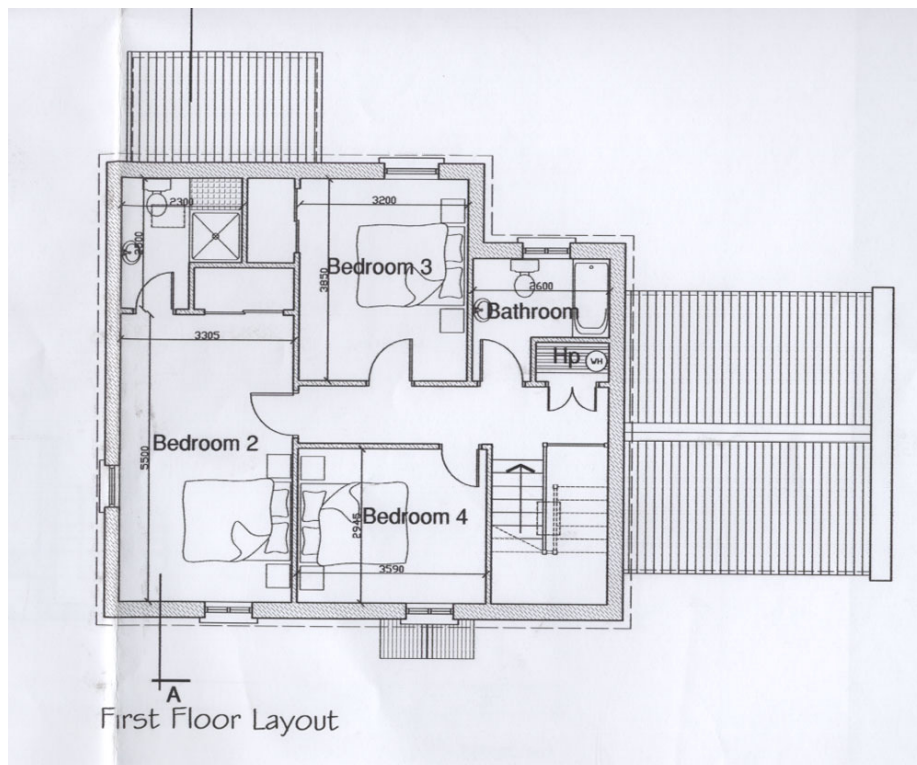


House No. 4 – Front Elevation

Entrance Lobby – Sitting Room – Kitchen & Dining – Utility – Bedroom 1 with shared WC / En-Suite – Master Bedroom En-Suite – Bedroom 3 – Bedroom 4 – Bathroom – Hotpress –
 Total Floor Area = 163.29m² / 1757 sq ft.



House No. 4 – Ground Floor



House No. 4 – 1st Floor